



***EGEA Congress***

***Sept. 27-October 2, 2009***

***Heeg, Fryslân***

***THE FUTURE***

***OF GEOGRAPHY...and the Northern  
Netherlands***

***opening address***

***and welcome by the***

***Faculty of Spatial Sciences***

***University of Groningen***

***prof.dr. P.H. Pellenburg***

***dean***

P.H. Pellenburg  
Faculty of Spatial Sciences  
University of Groningen  
URBAN & REGIONAL STUDIES INSTITUTE URSI

**RuG**

*Welcome participants\* in this  
most beautiful part  
of our country: the North*

*But: where exactly are we???*  
*Heeg? Fryslân? The North?*

*\* almost 200 students  
from 56 cities/universities  
in 22 European countries*

P.H. Pellenbarg  
Faculty of Spatial Sciences  
University of Groningen  
URBAN & REGIONAL STUDIES INSTITUTE URSI

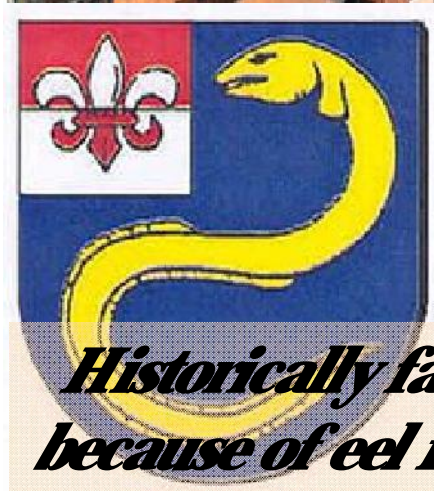
RuG



**HEEG, a small (2200 inh.) waterside town  
in the Southwest of Fryslân**



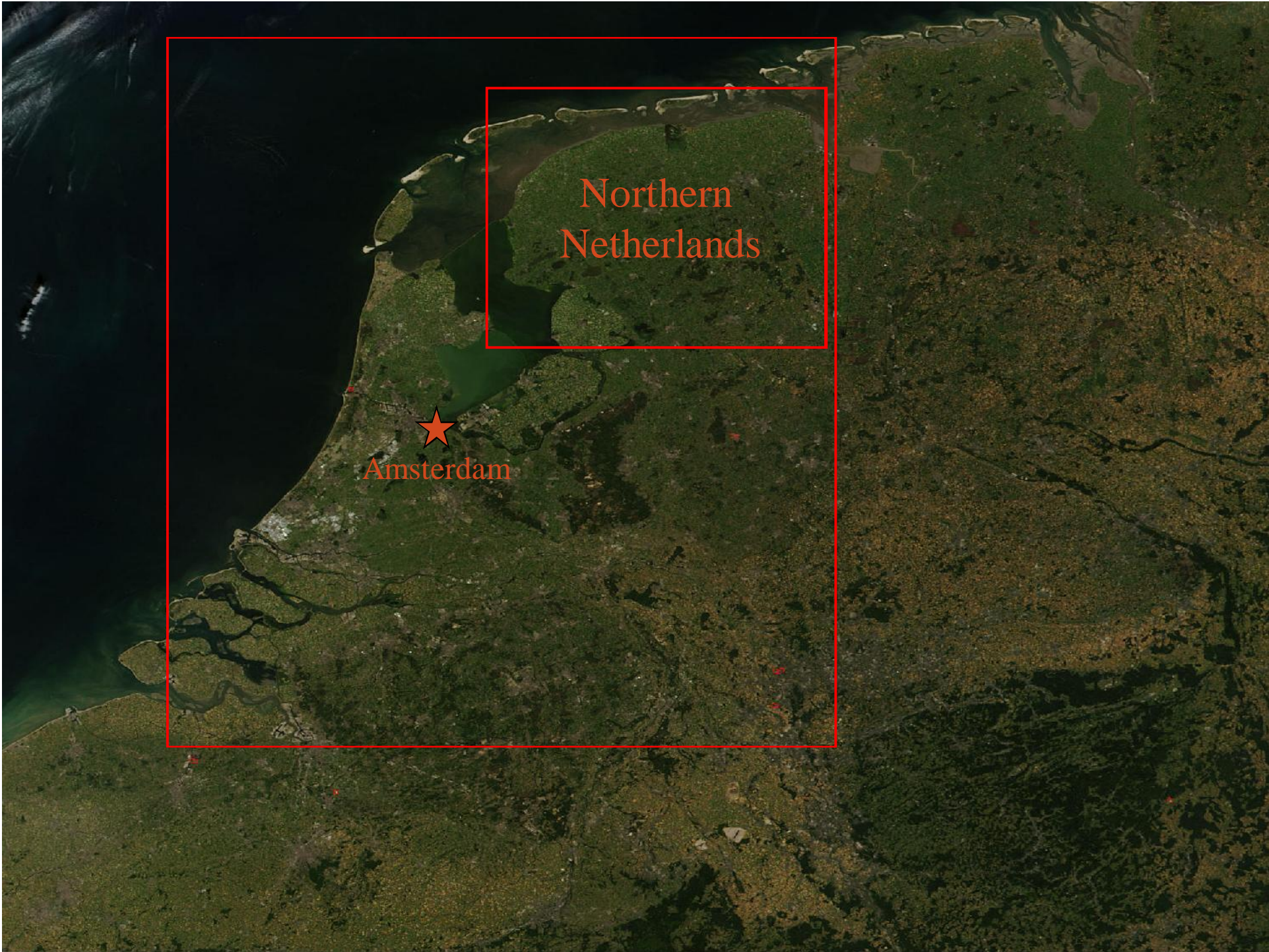
Stayokay hotel



*Historically famous  
because of eel fishing!*







Northern  
Netherlands

★  
Amsterdam



Amsterdam



FRYSLÂN

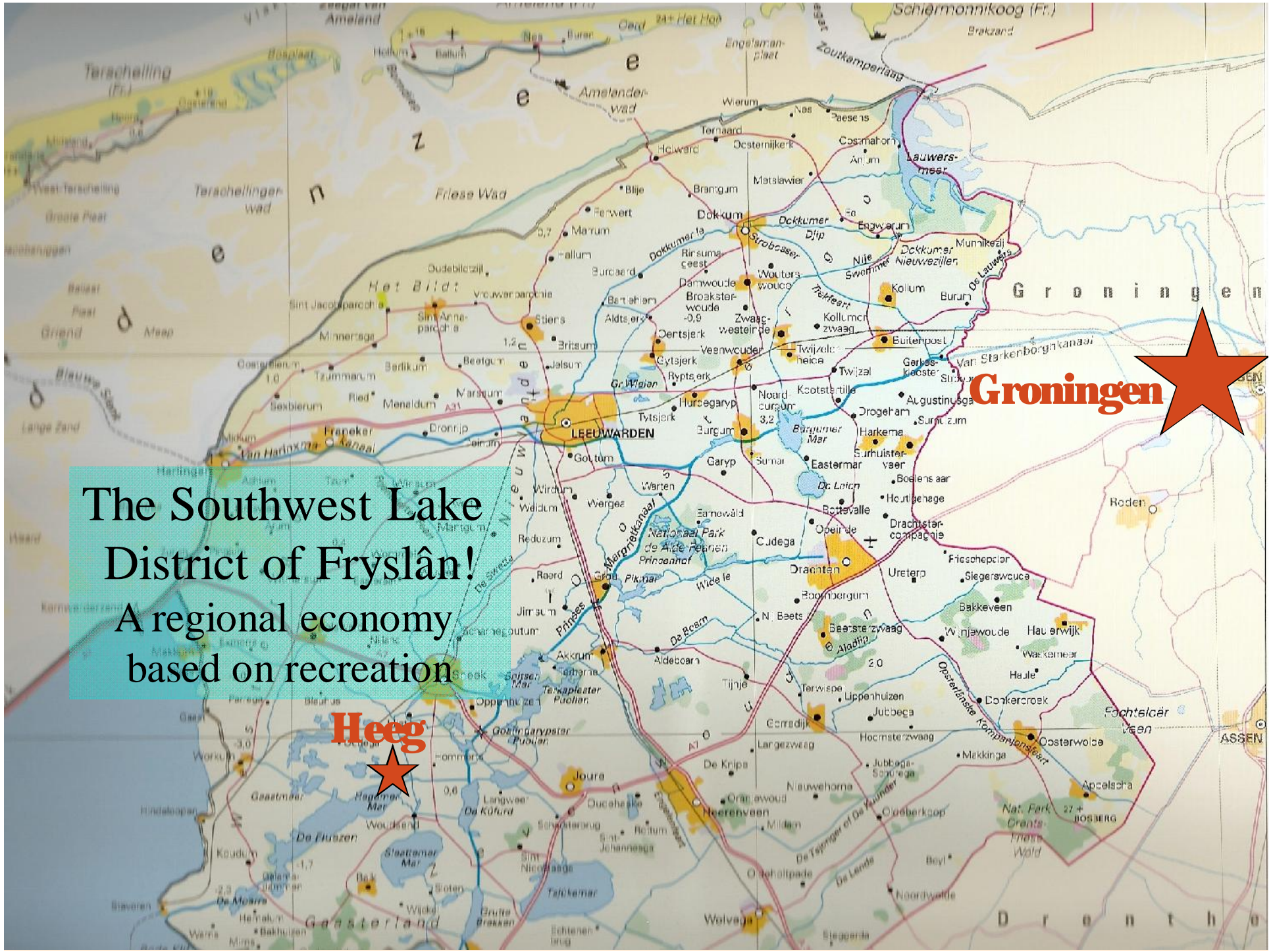
GRONINGEN

★ Groningen



HEEG

DRENTHE



The Southwest Lake District of Fryslân!  
A regional economy based on recreation

Heeg

Groningen

# *Fryslân is a very particular province of the Netherlands!*

- The Frysian language
- The Frysian culture: books, poetry, songs
- The Frysian sports!
  - handtennis (*'keatsen'*)
  - pole-leaping (*'fierljeppen'*)
  - barge sailing (*'skutsjesilen'*)
  - and of course the famous Eleven Cities Skating Tour (*'Elfstedentocht'*) 200 kms!

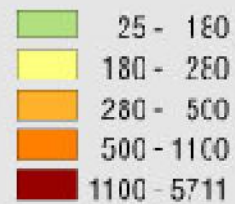




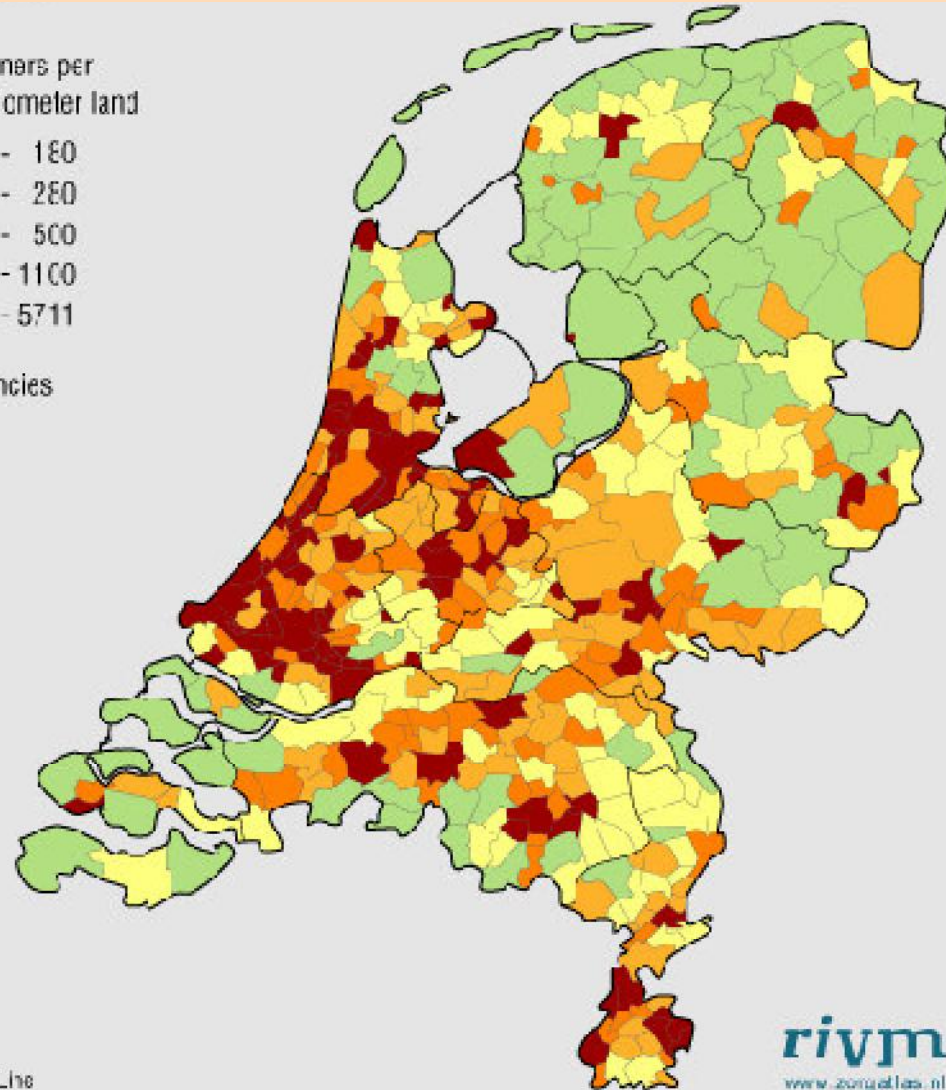
# *This is the green and quiet part of the Netherlands*

## Population density, by municipality

Aantal inwoners per  
vierkante kilometer land



— provincies



RuG

Bron: CBS StatLine

rivm  
www.zorgatlas.nl

# the most diversified landscapes of the country...

## landschappen van de zandgronden

- hoge zandgronden
- middelhoge zandgronden
- lage zandgronden
- kustduingebied

## beekdallandschappen

- diep ingesneden beekdalen
- beekdalen van de zandgronden
- stedelijke agglomeraties



50 km

## landschappen onder invloed van de zee

- waddengebied
- estuaria en zeearmen
- gereguleerde estuaria
- kwelders, schorren, gorzen

## grote zoete tot brakke afgedamde meren

- IJsselmeer en randmeren
- afgedamde estuaria en zeearmen

## landschappen van de grote rivieren

- centrale riviervlakte
- dal met rivierterrassen
- reliëfinversiegebied met kleine rivieren
- voormalig zoetwatergetijdengebied

## polderlandschappen

- veenplassengebied
- laagveengebied
- poelen- en kreekruiggengebied
- zeekleipolders
- terpengebied
- oude droogmakerijen
- nieuwe droogmakerijen

## hoogveenlandschappen

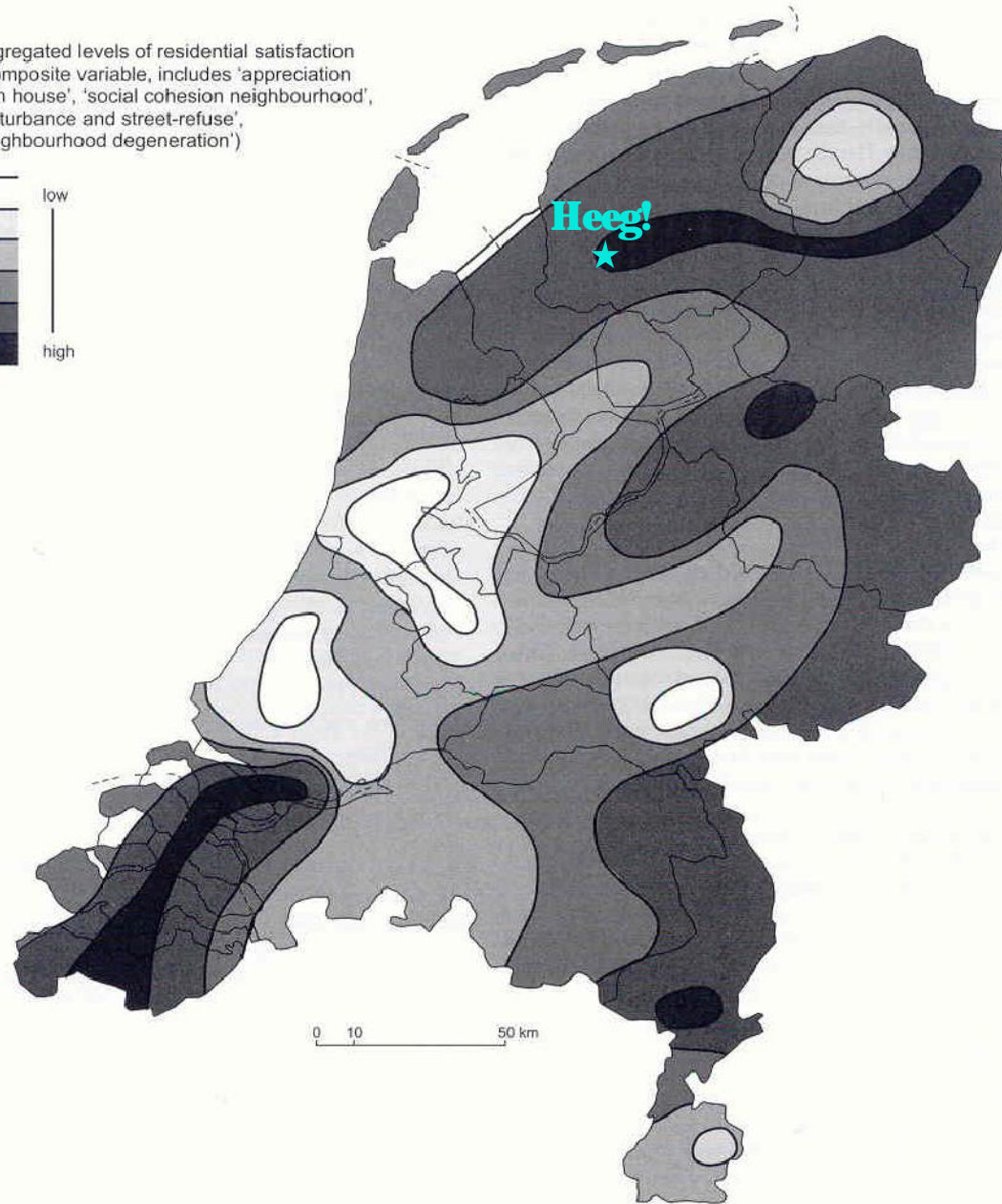
- hoogveengebied
- hoogveenontginningsgebied

## sterk versneden landschappen

- lössgebied
- mergel- en lössgebied

THE NETHERLANDS IN MAPS  
Housing (part 4)  
**Residential satisfaction**

Aggregated levels of residential satisfaction  
(Composite variable, includes 'appreciation  
own house', 'social cohesion neighbourhood',  
'disturbance and street-refuse',  
'neighbourhood degeneration')

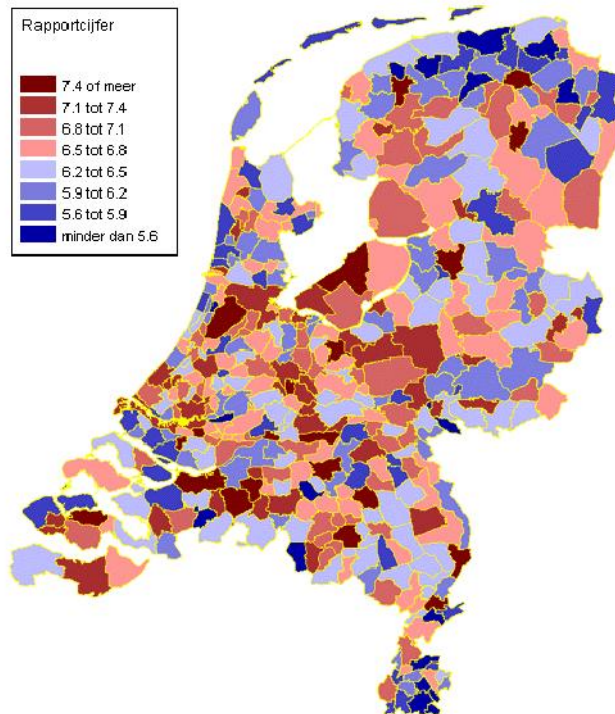


very much appreciated  
by all Dutchmen  
because of the region's  
residential quality

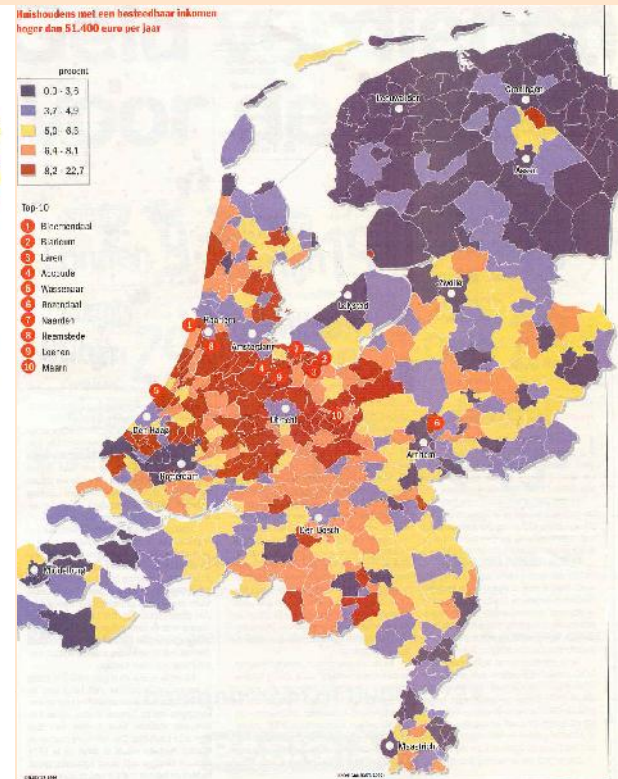
# *Of course there are also some drawbacks & problems*

- **Relatively low incomes**
- **Relatively high unemployment**
- **Moderate economic performance**

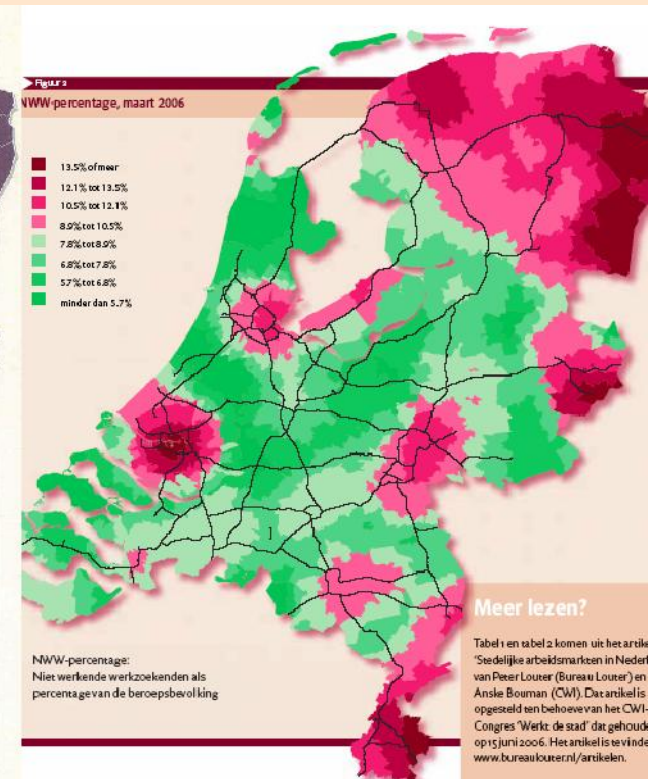
## *Economic performance*



## *Income level*



## *Unemployment*



*The University of Groningen is the only classical university in this 'empty part' of the Netherlands!*

*9 Faculties*

*60 Ba programmes*

*120 Ma programmes  
(60 in English)*

*9 Graduate schools*

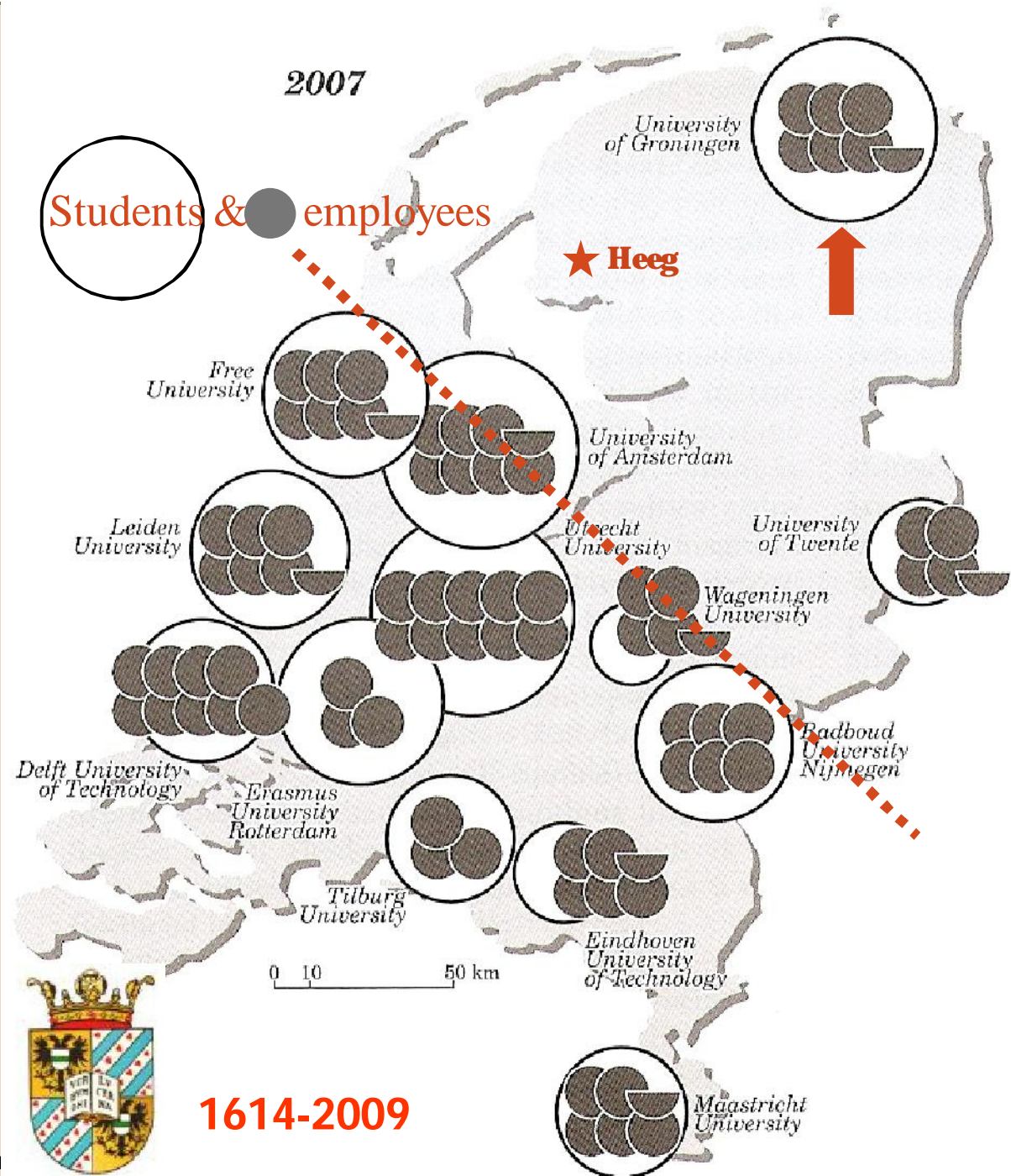
*> 25,000 students*

*5,000 employees*

*+ 10,000 in UMCG*

P.H. Pellenberg  
Faculty of Spatial Sciences  
University of Groningen  
**URBAN & REGIONAL STUDIES INST**

**RuG**



# *The Faculty of Spatial Sciences*

*established 1948*

*now ± 100 staff*

*and ± 1,000 students*

*2 bachelor programs*

*8 masters programs*

*Graduate School*

*50 PhD students*



P.H. Pellenberg  
Faculty of Spatial Sciences  
University of Groningen  
**URBAN & REGIONAL STUDIES  
INSTITUTE URSI**

**RuG**

# Teaching programs of the faculty of Spatial Sciences

year 1	year 2	year 3	year 4	year 5
<b>Bachelor Program Human Geography and Planning</b>			<b>Master Cultural Geography</b>	
			<b>Master Real Estate</b>	
			<b>Master Economic Geography</b>	
			<b>Master Planning</b>	
			<b>Master Demography</b>	
			<b>Master Geography teacher</b>	
			<b>Research Master Regional Studies</b>	
<b>Bachelor Program Environmental and Infrastructure Planning</b>			<b>Master Environmental and Infrastructure Planning</b>	



Programs in English language



## Research programs 2000-2008:

- 1. planning for environmental quality*
- 2. determinants of population dynamics*
- 3. explaining spatial-economic change*
- 4. making places*

International research assessment 2007:

nrs. 2 and 3 are among the 4 top-rated programs  
in the Netherlands

(grade 4,5 = very good/excellent)

*Our new research focus  
for the future:*

*The Geography of Population Change  
and Spatial Transformation*

P.H. Pellenberg  
Faculty of Spatial Sciences  
University of Groningen  
URBAN & REGIONAL STUDIES INSTITUTE URSI

RuG



# *Internationalisation*

- *More and more foreign students in the English language master programs*
- *Many possibilities for exchange students*
- *The Erasmus exchange programme with European universities*
- *Several structural relations with leading universities in other continents*

## *Examples:*

- *Dual Degree Ma programs with Bandung, Oldenburg*
- *the NEURUS/ICURD program with universities in Europe and the US*



*Good luck with  
your congress program!*

*Have a nice stay  
in the Netherlands*

*Come and visit us  
at the faculty  
in Groningen*

P.H. Pellenberg  
Faculty of Spatial Sciences  
University of Groningen  
**URBAN & REGIONAL STUDIES INSTITUTE URSI**

**RuG**





P.H. Pellenberg  
Faculty of Spatial Sciences  
University of Groningen  
**URBAN & REGIONAL STUDIES INSTITUTE URSI**

**RuG**