

Clinical Neuropsychology

Welcome!

**Dr. Janneke Koerts – master track coordinator
mastercoordinator.kn-cn@rug.nl**

What is Clinical Neuropsychology?

Neuropsychology

Studies the relation between the brain, cognition, emotion and behaviour

Clinical Neuropsychology

Studies impairments in these brain functions

because of:

neurological/neuropsychiatric conditions across the lifetime (babies, children, adolescents, adults, old adults)

Which conditions?

For instance

- **ADHD**
- **Autism**
- **Alzheimer's disease**
- **Brain tumours**
- **Dementia**
- **Depression**
- **Epilepsy**
- **Learning disabilities**
- **Multiple sclerosis**
- **Parkinson's disease**
- **Schizophrenia**
- **Stroke**
- **Substance abuse**
- **Traumatic Brain Injury**
- **etc.**

Clinical Neuropsychology

- **Clinic – different tasks, e.g.,**
 - Assessment
 - Treatment
 - Team coaching
- **Research – different research questions, e.g.,**
 - Determinants of neurological/neuropsychiatric conditions
 - Measuring deficits in cognition, emotion and behaviour
 - Effectivity of treatments for these deficits
 - Etc.
- **Some neuropsychologists combine research and clinical practice, e.g., in academic hospitals**

Scientist practitioner

In clinical neuropsychology:

- Scientific knowledge is applied in clinical practice

AND

- Questions and experiences in clinical practice are of influence on scientific research

For example:

- N=1 study neuropsychological assessment
- Applying treatment that has proven to be effective in a randomized controlled trial

Clinical neuropsychology is interdisciplinary

- Medical sciences, e.g., neurology, psychiatry
- Electrophysiology: EEG, heart rate, etc.
- Neuroimaging
- Human movement science
- Ergonomics, traffic psychology
- Physiotherapy, occupational therapy, health care, social work
- Etc.

**In clinical neuropsychology advanced techniques in measurement are used.
Clinical neuropsychology is theoretical as well as applied**

Clinic: Example questions

Assessment

- Does a 77-yr-old male with memory deficits have early dementia and can this be Alzheimer's disease?
- Does an 8-yr-old child with learning- and behavioural problems suffer from ADHD?
- What are the cognitive, emotional and behavioural consequences of a severe traumatic brain injury with frontal contusions in a 44-yr-old male; will the patient be able to return to work in the long term?

Clinic: Example questions

Treatment and team coaching

- Is it possible to teach a 45-yr-old female with traumatic brain injury to plan and organize her tasks and activities?
- Team counselling in how to approach a 71-yr-old female patient with dementia who gets extremely anxious when she has to take a shower.

Research: Example questions

- Do children with brain tumours suffer from impairments of (social) cognition?
- Are people with early dementia still able to drive a car?
- Do adults with ADHD suffer from memory impairments?
- Can clinicians trust the information given by patients themselves?
- What is the influence of psychosis on making financial decisions?

Job perspectives after the master clinical neuropsychology

- Patient related research in the field of Clinical Neuropsychology
 - PhD
 - Post-doc, researcher at university, industry, insurances, etc.
- Clinical work in the applied field
 - Neurological and psychiatric hospitals
 - Other clinical centres (e.g. Epilepsy centres)
 - Rehabilitation centres
 - Nursing homes
 - Schools
- Other
 - Teaching
 - Management and policy making (Ministry of Education)

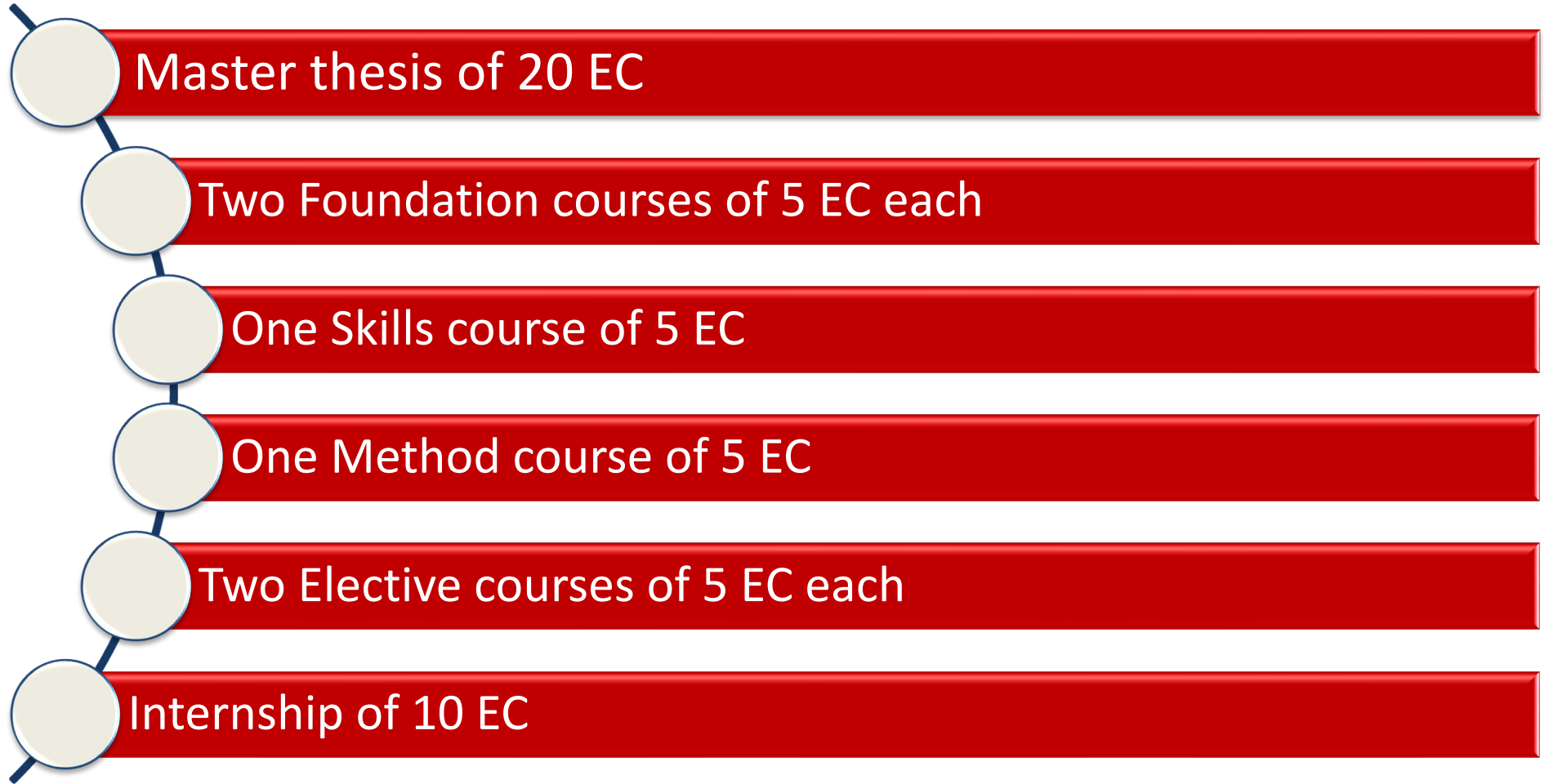
.... from Bachelor to Master

Relevant topics in the Bachelor

- Biopsychology
- Introduction into clinical neuropsychology
- Research methods
- Psychopathology
- Clinical psychology
- Communication and diagnostic skills
- Deception in Clinical Settings
- Neuropsychology of ageing and dementia
- Clinical Neuropsychology
- School Neuropsychology
- Developmental Neuropsychology

Master Clinical Neuropsychology

60 EC





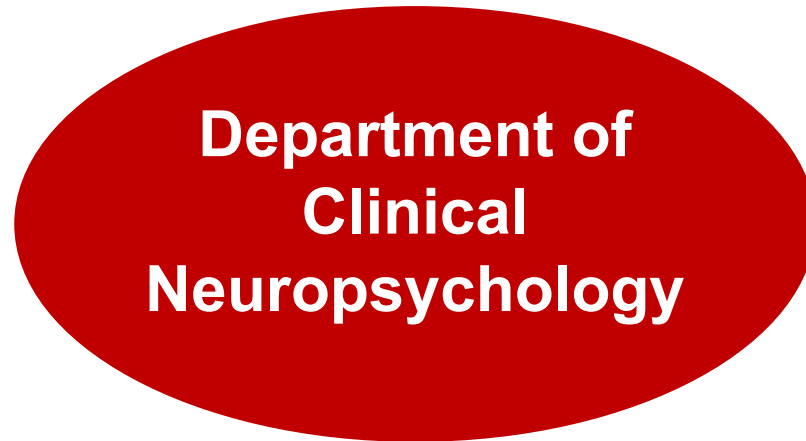
Visual perception



Neurodevelopmental disorders



Financial capability



Neurofeedback



Psychosis



Traffic psychology



Acquired brain injury



Visual



Neuro



orders



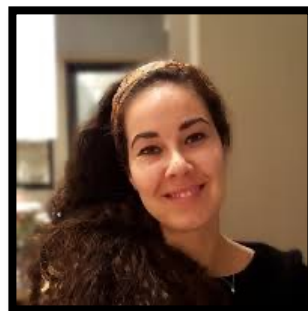
Applied research

Development of advanced assessment tools

Collaboration

Clinical Neuropsychology

Innovative treatments



Psych

Stimulating participation



Traffic psychology

Higher order cognitive functions



quired brain injury

Master Clinical Neuropsychology

- Foundation courses* - choose 2 of the following 3 courses (total 10 EC):
 - Neuropsychology & Psychiatric Disorders
 - Advanced Clinical Neuropsychology
 - Neuropsychological Treatment & Rehabilitation
- Skills course* - choose the following course (5 EC)
 - Neuropsychological Assessment

For detailed descriptions of the different courses, please see:

<https://www.rug.nl/ocasys/>

*Subject to change

Master Clinical Neuropsychology

- Method courses* - choose 1 of the following 3 courses (total 5 EC)
 - Research Methods in Clinical Neuropsychology
 - Repeated Measures
 - Test Construction
- Elective courses* - choose 2 courses (total 10EC)
 - Capita Selecta Clinical Neuropsychology
 - Medical Neuropsychology
 - Child Neuropsychology
 - One of the remaining foundation or method courses
 - A course within another master track of psychology (e.g., social psychology)

For detailed descriptions of the different courses, please see: <https://www.rug.nl/ocasys/>

*Subject to change

Master thesis (20 EC)

At the beginning of each semester different master thesis projects are offered

During your master thesis project you will collaborate with a staff member, and, in some projects, also with your fellow students

Based on the research you are doing you have to

- Write a master thesis
- Give a presentation about your research

Internship (10 EC)

- Internship is mandatory
- A clinical internship is difficult in the Netherlands – requires speaking Dutch on a high level
- A research internship or a ‘product internship’ is possible in Groningen
- *If you consider completing the GZ-opleiding (Dutch postdoctoral training to become a health care psychologist), please be aware that a 10EC clinical internship does not fulfil the admission criteria of the GZ-opleiding which requires a clinical internship of at least 19EC.*
- The Dutch Klinische Neuropsychologie track includes a 20EC clinical internship – **requires speaking Dutch on a high level!**
- Questions about internships: please send an email to stagecoordinatorpsy@rug.nl

Internship (10 EC)

- Plan ahead!
- Objective: get to know a professional work setting and get some practical experience as a professional
- Activities should match with the content of your master track
- It's your responsibility to find an internship, UG facilitates (database with internships, job interview training/training in networking by RUG, Careerservices, check website)
- Please start your orientation on this topic early: what would you like to do in what kind of organization, what would you like to learn, who in my network can you approach at that time for an internship?

Admission and selection criteria

- Admission to the master clinical neuropsychology is organized by the admission committee of psychology
- More information about admission and selection?
<https://www.rug.nl/gmw/psychology/education/master/application-admission-and-selection/>
- Questions? - toelatingscommissie.masterpsy@rug.nl

Interesting alternative?

Research Master Behavioral and Social Sciences

- Specialization: Mental health: Perspectives from Neuro- and Clinical Psychology
- Allows you to gain clinical and research experience
- More information: <https://www.rug.nl/masters/behavioural-and-social-sciences-research/?lang=en>

To get an impression of the programme: <https://www.youtube.com/watch?v=-JjfJ9Y69QY>

Questions?

mastercoordinator.kn-cn@rug.nl