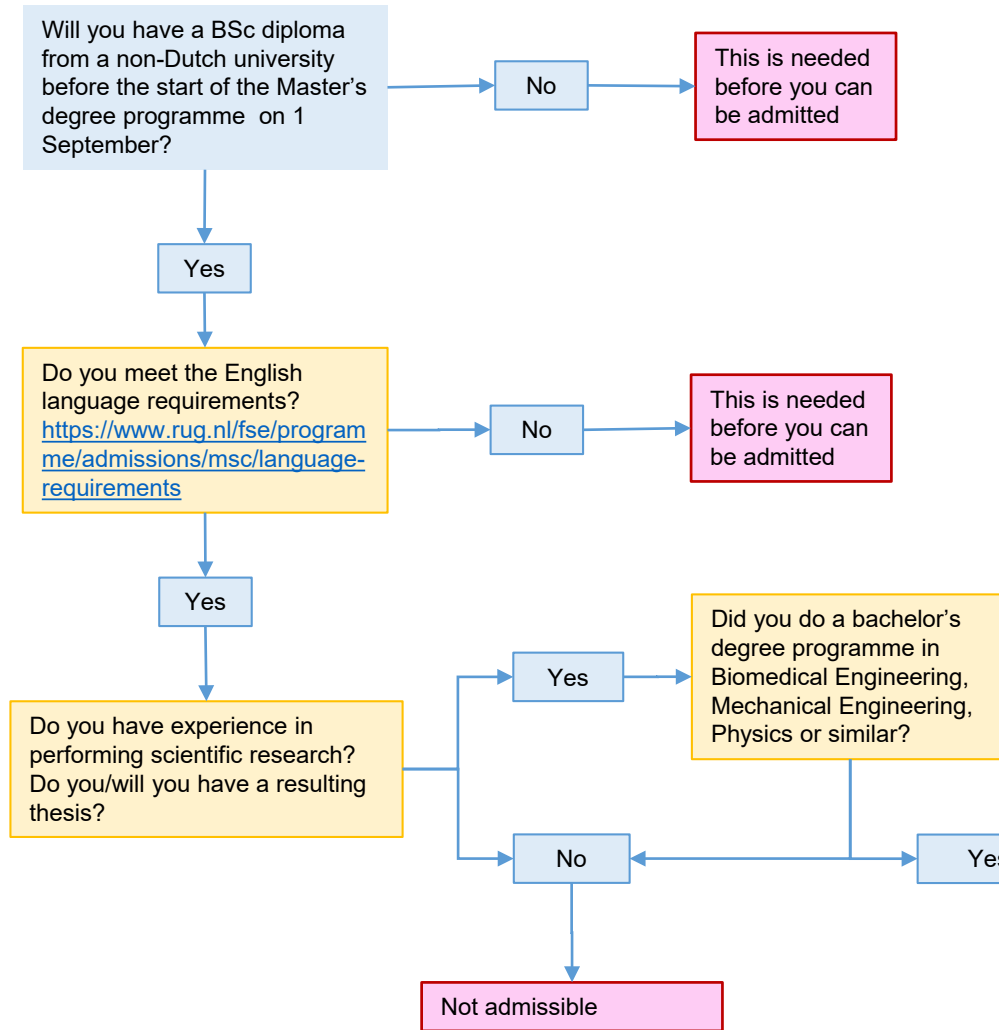


# Preliminary eligibility check International degrees Master's Degree Programme in *Biomedical Engineering* at the University of Groningen



The BME Admission Board determines whether the specific content of your bachelor curriculum meets the admission requirements of Master's degree programme in Biomedical Engineering. Your background needs to be clear from your transcript of grades/courses followed during your bachelor degree programme.

Note: This means that any *non-university* courses/topics from high school, self-study, etc. will *not be taken into account during the admission process* as we require all background knowledge to be at a bachelor level.

Your background should include courses at bachelor level in:

- **Mathematics**, including **Calculus** topics Linear Algebra, and **Statistics**.
- **Physics** topics Mechanics, Electricity and Magnetism, Waves and Optics, Mass transport and Thermodynamics.
- **Engineering/Design**

Other highly recommended course topics are:

- Anatomy
- General Biology
- Cell Biology
- Microbiology
- Computer Aided Manufacturing & Computer Aided Design
- Imaging Techniques
- Material science
- Biochemistry
- Organic chemistry

When you apply you need to include the *course descriptions*, as mentioned at the end of the checklist (see [Entry requirements](#) (choose: International diploma / Registration procedure)).

Note: Without clear course descriptions the BME Admission Board is unable to check if you meet the requirements.

How many of the following courses topics are part of your bachelor programme (curriculum)?

You need at least:

1. 10 ECTS of Mathematics (Calculus, Linear Algebra, Statistics)
2. 10 ECTS of Physics (Mechanics, Electricity and Magnetism, Waves and Optics, Mass transport, Thermodynamics)
3. 5 ECTS of general Biology or Microbiology
4. 5 ECTS of Anatomy or Cell Biology
5. 10 ECTS of Material Science, Biochemistry or Organic Chemistry
6. 5 ECTS Engineering/Design

